

An aerial photograph of a large, circular crop circle in a golden-brown field. The circle has a complex, symmetrical design with a central circle, a ring of smaller circles, and a series of curved lines radiating outwards. In the background, there is a line of trees and a small building with smoke rising from it.

Crop Circles

Why They Can't be a Hoaxed Phenomenon

A Mighty Companions Booklet

Crop Circle Facts

WHERE: Every continent except Antarctica.

WHEN: Reports exist for 298 before 1980, including 25 circles before 1940, as part of more than 2,000 formations reported to date. However, indications are that the phenomenon is much older -- even prehistoric, showing up in cave paintings.

EYEWITNESS ACCOUNTS OF CIRCLES BEING FORMED: 25

HOW: When "crop circles" became "crop formations," during the 1980s, all possibilities disappeared of these complex shapes being a weather phenomenon, or delivered by any technology known to us, or being made by hoaxers.

IN WHAT: Mostly wheat, canola (oil seed rape) and barley. Also corn, beans, potatoes, strawberries, sugarcane, sunflowers, rice, oats, sprouts, flax, turnips, soybeans, grass -- and even trees and ice.

LARGEST: An area the size of two football fields.

LONGEST: A skinny one, three quarters of a mile long.

"I believe the acceptance of this genuine phenomenon could release human consciousness from the narrow, oppositional focus in which humanity is so endangered. I also think that were we listening, wisdom and skills that are beyond us now possibly could be imparted by an intelligence vaster than our own."

—Suzanne Taylor

Bent Stalks



The canola stalk, seen above, is as brittle as celery and impossible to bend by hand without breaking. As a regular feature of circles in all crops, the energy that forms them makes impossible bends in the shafts.

Blown Nodes



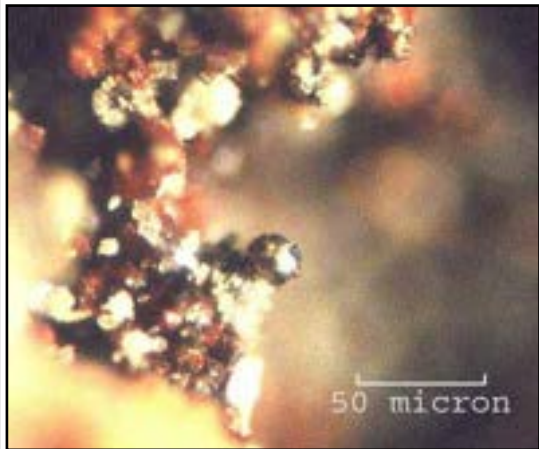
Holes in nodes of the stems, frequently found inside crop circles but never outside them, bear witness to the energy that forms the formations, which functions much like microwaves do.

Growth Rate Changes



When crop circles occur in young crop, where the seed head is still forming, even though phototropism occurs, where the plants, which are unbroken, turn up and continue to grow, the developing embryo fails to grow normally and produces poor seeds.

Magnetic Particles



Microscopic magnetic particles are found in the soil and on the plants within some formations. Strangely, they are nearly perfect spheres, suggesting they are created in the air and not in the ground.

Selective Downing



A fair number of single grain stalks, that would have been downed by rollers and boards, are left standing, as are foreign plants that grow amongst the grain crops, like this flower.

Complex Plant Lay



Often the intricate lay of downed crop is well beyond how people could manipulate plants. (Sometimes it's multilayered, with a different pattern in each layer.)

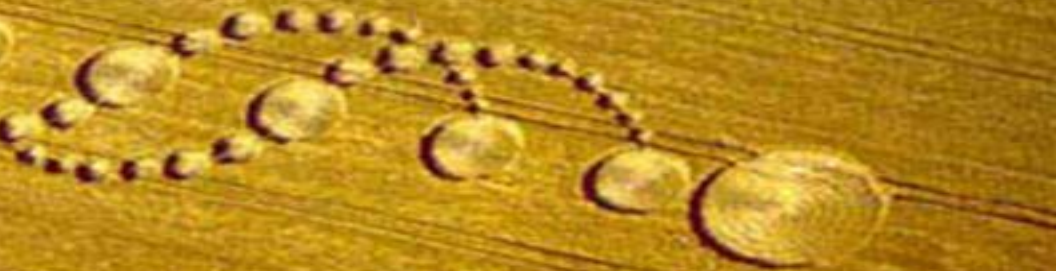




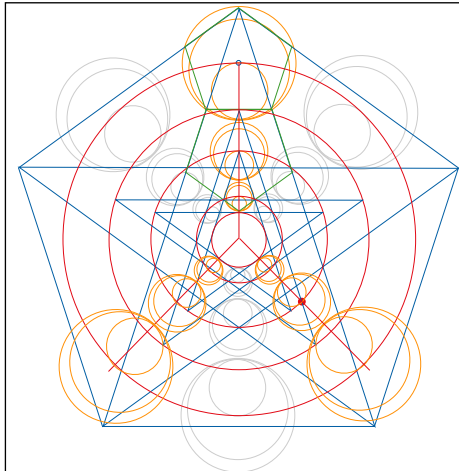
"After honest appraisal of crop circle data it is impossible to maintain the rationalistic world-view on which modern science and education are founded. One is led into unfamiliar channels of thought, which point away from structured theories and hard-and-fast beliefs towards a more mystical view of reality and, eventually, towards the greater mysteries of divinity and the living universe."

Ralph Noyes

"The Crop Circle Enigma: Grounding the Phenomenon in Science, Culture and Metaphysics"



Crop Circle Geometry



The geometry used to design many crop circles can be so complex that it would require days for surveyors to map them out, yet they usually are discovered in the morning, after the 4 to 5 hours of darkness during English summer nights.

Adjustment for Hilly Terrain



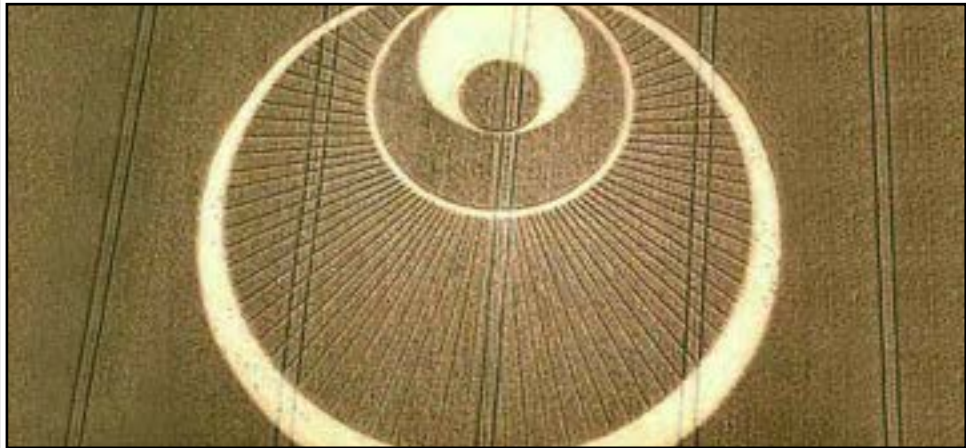
Formations are adjusted for hilly terrain so that they look geometrically correct from the air. Perfect equilateral triangles can be drawn from the three circles closest to the center all the way out to the last three circles in the arms of this formation.

Woven Features



Intricately woven “nests,” something that people can't do with plants, are a common feature of crop circles.

Narrow Lines



The lines in the formation above are only six inches wide—far too narrow for a human being to walk in.

Picture Reproductions



This formation, done in a "dot-screened" process, which is used in printing photographs, defies what human hands working with plants could do.

Human Influence



Sometimes circles come in response to requests. This origami pattern arrived after a Japanese group, in meditation, asked for a symbol they would recognize.

In Plain Sight

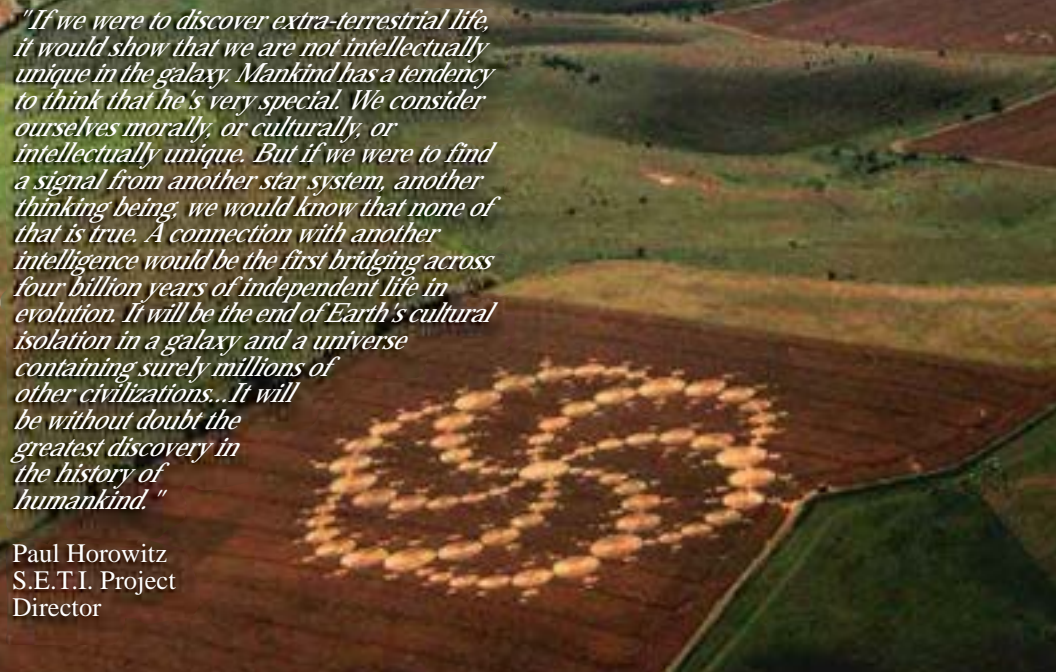


Many crop circles appear next to well-traveled roads and public gathering places where human activity would be seen, yet only one hoaxer has been caught...in a sting. This crop circle rings a busy T-junction.

3D Effects



Some crop circle plant lays create 3D effects visible from the air on sunny days.

An aerial photograph of a rural landscape featuring rolling green hills and a large field of reddish-brown soil. In the center of the field, a distinct crop circle pattern is visible, consisting of numerous small, circular indentations in the ground arranged in a grid-like fashion. The text is overlaid on the left side of the image.

"If we were to discover extra-terrestrial life, it would show that we are not intellectually unique in the galaxy. Mankind has a tendency to think that he's very special. We consider ourselves morally, or culturally, or intellectually unique. But if we were to find a signal from another star system, another thinking being, we would know that none of that is true. A connection with another intelligence would be the first bridging across four billion years of independent life in evolution. It will be the end of Earth's cultural isolation in a galaxy and a universe containing surely millions of other civilizations...It will be without doubt the greatest discovery in the history of humankind. "

Paul Horowitz
S.E.T.I. Project
Director



No Access Fields



This formation recently appeared in a field of soy beans in Ohio. Because it is organic, there are no "tram lines" (the tracks for tractors to fertilize), so there was no way to get into the field without leaving a trail.

Guarded Fields



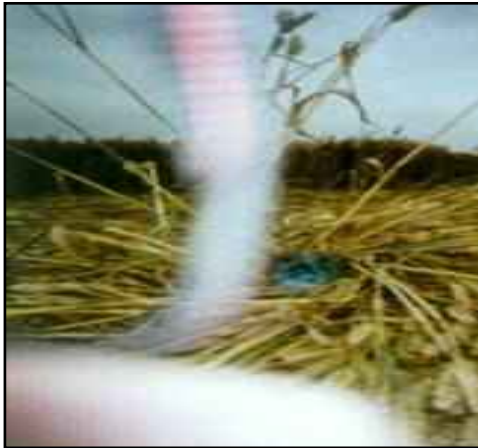
This formation appeared in the walled estate of Andrew Lloyd Webber. His heavy security, including omni-present motion sensors, failed to detect any intrusion.

Insect Anomalies



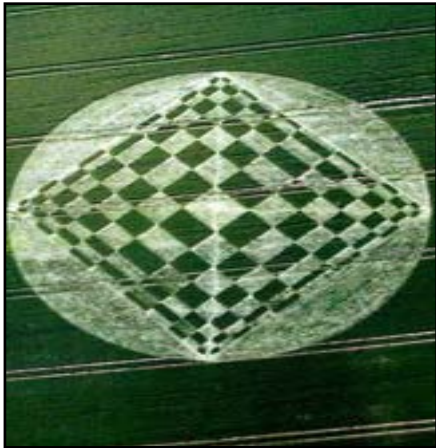
Insects taken by surprise in the act of feeding occasionally are found "glued" to the plants.

Energy Flares



Energy flares sometimes are seen with the naked eye; some inexplicable unseen light effects show up in developed pictures.

Equipment Failure



Electronic and magnetic equipment often fails, and batteries drain within formations. The camera that took this strange picture, above the "pillow formation," suffered inexplicable, irreparable harm.

Balls of Light



Balls of light, seemingly under intelligent control, are commonly seen, videotaped and photographed in and around crop circles.



"A great power has arisen, directing thoughts and perception in a certain direction, towards a more complete and satisfactory view of reality than the modern conventions of materialism have previously allowed. Gently, subtly, with no disturbance or panic, we are being guided across a watershed, from one world view to another. And this is in no way arbitrary, but a purposeful process, in accordance with the interests of eternal nature and the necessities of the present. We can now see something of what the ancients meant when they spoke of revelation."

John Michell

Author of "The Dimensions of Paradise"





Suzanne Taylor

suzanne@mightycompanions.org

<https://suzannetaylor.substack.com>

<https://suespeaks.org>

<https://suespeaks.org/crop-circles>

**We're making it all up,
so it might as well be wonderful!**